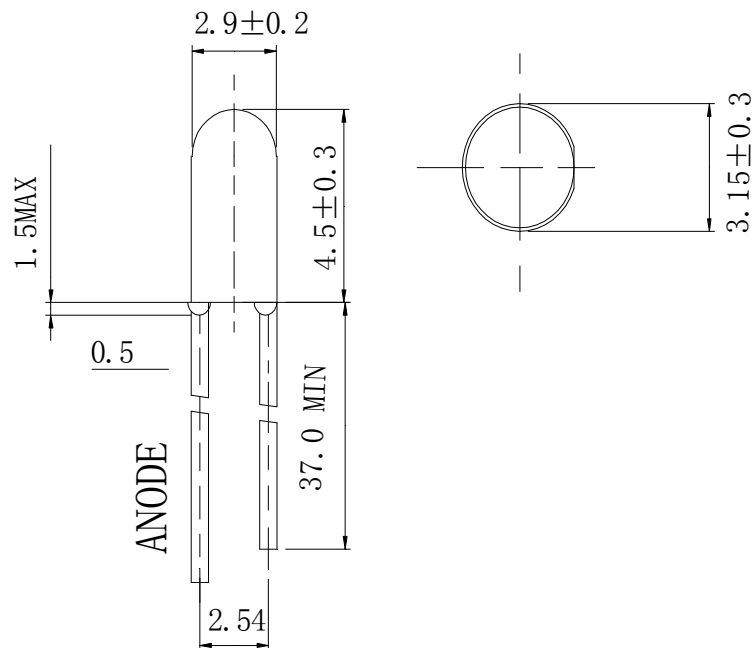


Features

- 3mm DIA LED Lamp
- Low Power Consumption
- High Efficiency
- Various Colors and Viewing Angle
- Long Solid State Reliability
- Package: 1000pcs/Packing

Applications

- Indicator

Package Dimensions**Notes:**

1. All dimensions are in millimeters (inches).
2. Tolerance is $\pm 0.25\text{mm}$ (.01") unless otherwise noted.
3. Protruded Resin under flange is 1.0mm (0.04") max.
4. Specifications are subject to change without notice.

www.FantasyLeds.com

Sales@FantasyLeds.com

Form No:

Rev: V.2

Page: 1 of 4

Approved By:

Prepared By:

Date:



Selection Guide

| Part No | Lens Type | Dice | Emitted Color |
|------------------|----------------|---------|---------------|
| FDL-3451G-ZGDL37 | Green Diffused | AlInGaP | Green |

Electrical / Optical Characteristics At Ta=25°C

| Symbol | Parameter | Min. | Typ. | Max. | Unit | Test Condition |
|--------|--------------------------|------|------|------|------|----------------|
| Iv | Luminous Intensity | | 60 | | mcd | IF=20mA |
| 2θ1/2 | Viewing Angle | | 30 | | deg | IF=20mA |
| λ Peak | Peak Emission Wavelength | | 574 | | nm | IF=20mA |
| λ d | Dominant Wavelength | | 570 | | nm | IF=20mA |
| Δλ | Spectral Line Half-Width | | 15 | | nm | IF=20mA |
| VF | Forward Voltage | | 2.0 | 2.5 | V | IF=20mA |
| IR | Reverse Current | | | 100 | uA | VR 5V |

Note:

1. θ1/2 is the angle from optical centerline where the luminous intensity is 1/2 optical centerline value

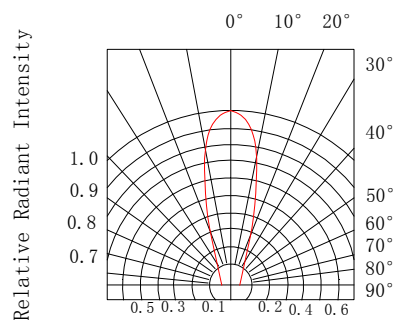
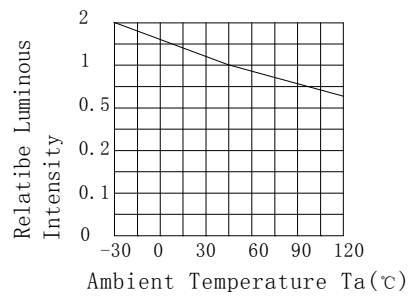
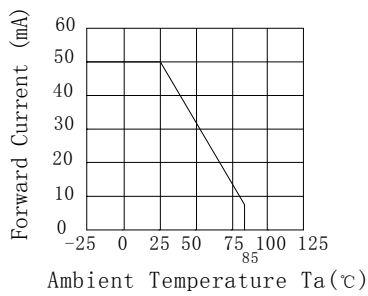
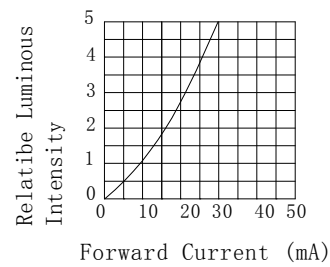
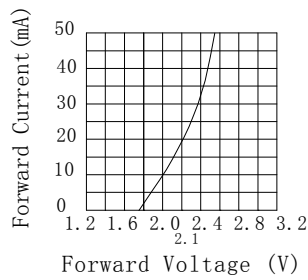
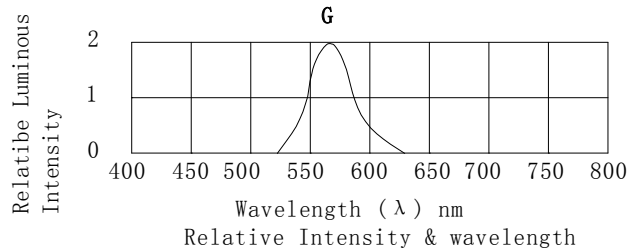
Absolute Maximum Ratings At Ta=25°C

| Parameter | Green | Unit |
|-----------------------------|---------------------|-------|
| Power Dissipation | 75 | mW |
| Peak Forward Current[1] | 80 | mA |
| Continuous Forward Current | 30 | mA |
| Dreading Linear From 25°C | 0.4 | mA/°C |
| Reverse Voltage | 5 | V |
| Operating Temperature Range | -55°C to + 85°C | |
| Storage Temperature Range | -55°C to + 85°C | |
| Soldering Condition | 260°C For 5 Seconds | |

Note:

1. 1/10 Duty Cycle, 0.1 ms Pulse Width

Electrical Optical Characteristics Curves At Ta=25°C



Radiation Diagram

Notes:

1. The LEDs should be used within a year.
2. The LEDs should be kept in 5~30°C and 60% RH for less.
3. The LEDs should be used within 24 hours, or else should be kept a 5~30°C and 30% RH or less. And LEDs should be used within 7 days after opening the package.

Reliability Test Items Conditions

| Classification | Test Item | Test Conditions | Test hours | Result |
|--------------------|-----------------------------------|---|------------|--------|
| Endurance Test | Operation Life | Connect with a power $I_F=20mA$ T_a =Under room temperature | 1000Hrs | 0/100 |
| | High Temperature High Humidity | $T_a=+65^{\circ}C \pm 5^{\circ}C$ RH=90%-95% | 240Hrs | 0/100 |
| | High Temperature Storage | High $T_a=+85^{\circ}C \pm 5^{\circ}C$ | 1000Hrs | 0/100 |
| | Low Temperature Storage | Low $T_a=-35^{\circ}C \pm 5^{\circ}C$ Test time=1000hrs | 1000Hrs | 0/100 |
| Environmental Test | Temperature Cycling | $-45^{\circ}C \sim +105^{\circ}C$ 15min 5min 15min | 300 Cycles | 0/100 |
| | Thermal Shock | $-35^{\circ}C \sim \pm 5^{\circ}C \sim +85^{\circ}C \sim \pm 5^{\circ}C$ 5min 10sec 5min | 300 Cycles | 0/100 |
| | Solder Resistance | Preheating: $120^{\circ}C - 150^{\circ}C$, within 2 minutes. Operation heating : $260^{\circ}C$ (Max.), within 5 seconds (Max.) | 5Cycles | 0/100 |

Judgment criteria of failure for the reliability

| Measuring items | Symbol | Measuring conditions | Judgment criteria for failure |
|--------------------|--------------|----------------------|-------------------------------|
| Forward voltage | $V_F(V)$ | $I_F=20mA$ | Over $U \times 1.2$ |
| Reverse current | $I_R(\mu A)$ | $V_R=5V$ | Over $U \times 2$ |
| Luminous intensity | $I_v(mcd)$ | $I_F=20mA$ | Below $S \times 0.5$ |

Note: 1.U means the upper limit of specified characteristics. S means initial value.

2.Measurment shall be taken between 2 hours after the test pieces have been returned to normal ambient conditions after completion of each test.